



**ORANGA
TAMARIKI**
Ministry for Children

Te Kāwanatanga o Aotearoa

Working with Iwi and Māori – A Snapshot

As at July 2020



Introduction

Oranga Tamariki is on a journey of organisation and system transformation - we cannot do this alone.

Iwi and Māori organisations are crucial to this system transformation which at its heart is about enabling whānau, hapū and iwi to express whakapapa, whanaungatanga and mana tamaiti in a way that is meaningful to their whānau and mokopuna. Therefore to meaningfully improve outcomes for tamariki we need to work closely iwi and Māori organisations

Section 7AA of the Oranga Tamariki Act 1989, requires the Ministry to respond to invitations for strategic partnerships from hapū, iwi and Māori organisations. These partnerships present a significant opportunity to work in partnership together to design new services, to better involve whānau, hapū and iwi in decision-making, and to delegate accountabilities and power.

The Treaty of Waitangi duties set out in section 7AA are additional to the duties to uphold the promises made when the Crown and Tangata Whenua entered their partnership at Waitangi in 1840. Iwi, through the Courts and the Waitangi Tribunal, have played a fundamental role in the articulation of these promises as a set of principles including: the duty to act in good faith, active protection and partnership.

The Ministry has a range of relationships with iwi and Māori organisations.

In this context it is important that we as a Ministry are transparent about the different partnerships we have with iwi and Māori organisations. This report is one of a number of different ways I have of informing the NZ public about the work of Oranga Tamariki, and to update you on what progress we are making in transforming the system we are responsible for. These relationships range from formal Treaty-based accords, strategic partnership agreements, memoranda of understanding, localised agreements to support the delivery of services, and relationship agreements to support the day-to-day operation of our sites and residences.

To that end, this report provides a stock take of our current engagement with iwi and Māori organisations. The report also provides an overview of progress in the development of our relationships over the past year.

This report highlights that the Ministry has a range of relationships with iwi and Māori and will be updated annually and published on our website –

www.orangatamariki.govt.nz

Highlights from the past three months

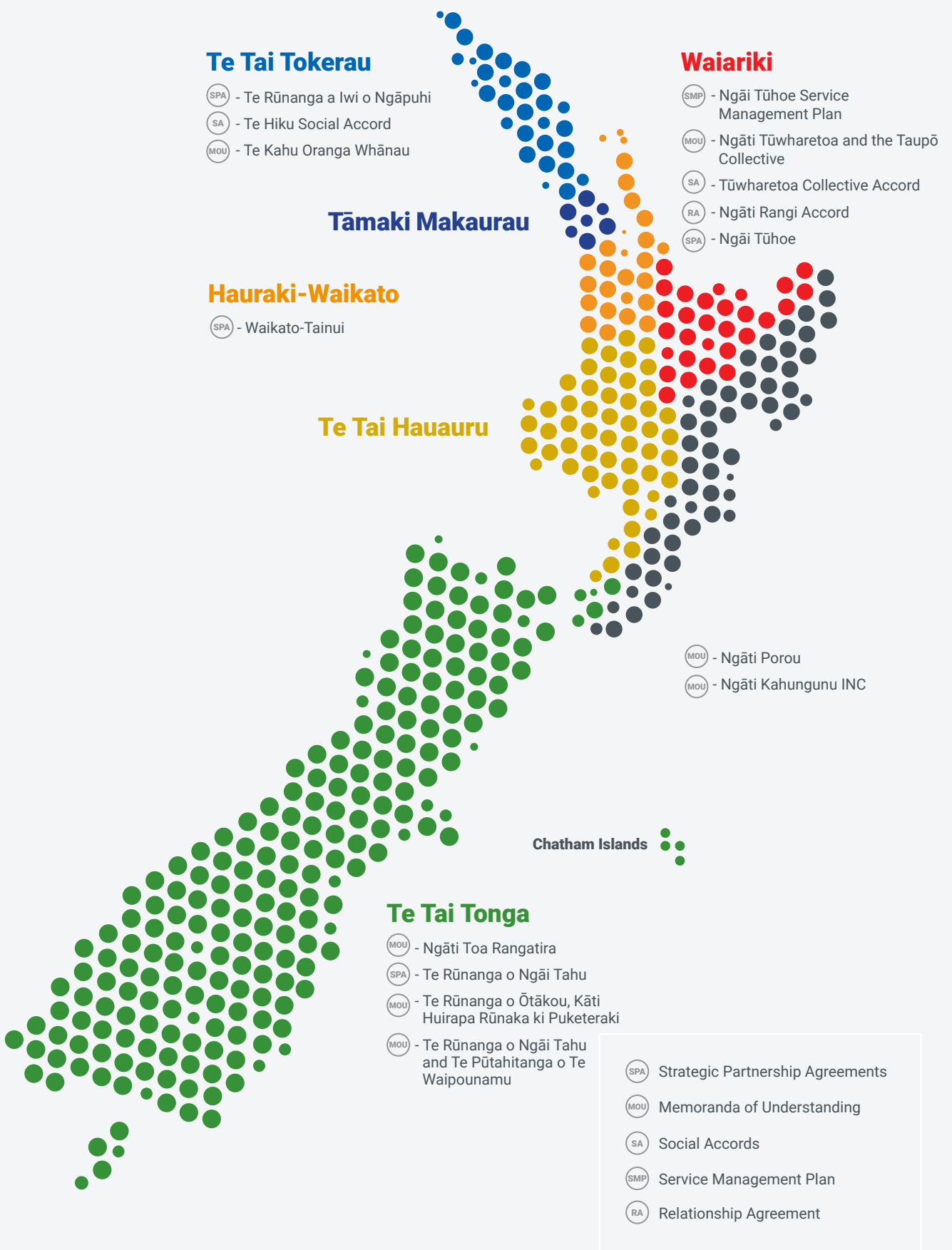
- A Strategic Partnership Agreement was signed with Waikato-Tainui Iwi, which renewed our commitment to partnership and was a significant step forward under Section 7AA of the Oranga Tamariki Act 1989. This has been underpinned by the Mokopuna Ora partnership, focused on preventing Waikato-Tainui mokopuna coming into care and supporting whānau caregivers to keep tamariki within their wider whānau, where possible.
- Ngāi Tūhoe signed the Matemateāone (partnership agreement) with Oranga Tamariki in August of this year (2019). This agreement records a shared work focus on the design and development of caregiver and home assessment standards, enabling a “Tūhoe” centric set of assessment standards.
- A memorandum of understanding has been signed with Te Kahu Oranga Whānau, a collective of Māori providers in Te Hiku known as ‘The CoLab’, to work closer together to improve outcomes for tamariki Māori and their whānau.
- Ngāpuhi Iwi Social Services (NISS) received an award at an indigenous affairs conference held by the Australia and New Zealand School of Government. The award recognises innovative work in designing services for indigenous communities. The service was co-designed by NISS and Oranga Tamariki and is the first of its kind in the world.



Gráinne Moss | Chief Executive



Formal Treaty-based Agreements



Our Mahi Current Focus as at July 2020

Early Intervention

We coordinate support and services for children and whānau showing early signs of need.

SWiS (Social workers in Schools).

A programme that delivers Social worker support for year 1-8 tamariki in decile 1-3 schools and kura.

- Hauraki Māori Trust Board
- Hinengakau Maatua Whangai
- Kahungunu Executive
- Mana Social Services Trust
- Ngā Kete Matauranga Pounamu Charitable Trust
- Ngāpuhi Iwi Social Services Limited
- Ngāti Awa Social Services Trust Inc
- Ngāti Kahu Social and Health Services Incorporated
- Ngāti Ruanui Tahua Limited
- Rakeiwhenua Trust
- Rangitāne O Wairarapa Incorporated
- Raukawa Whānau Ora Limited
- Te Aka Ora Charitable Trust
- Te Kupenga Hauora-Ahuriri
- Te Pou Oranga o Whakatōhea Limited
- Te Rarawa Anga Mua Trust
- Te Roopu Awhina ki Porirua Trust
- Te Rūnanganui o Ngāti Porou Trustee Limited
- Te Tai-Awa O Te Ora
- The Ngāti Maniapoto Marae Pact Trust (Incorporated)
- Tu Tama Wahine o Taranaki Incorporated
- Tūwharetoa ki Kawerau Health, Education and Social Services
- Waahi Whanui Trust.
- Tūhoe Hauora

Tauwhiro Taiohi – Youth Workers in Secondary Schools (YWiSS) Social and Youth Support in limited North Island secondary schools.

- Ngāpuhi Iwi Social Services
- Ngāti Kahu Social and Health Services

Family Start.

Family Start is a child-centred, intensive home visiting programme that focuses on improving children's health, learning and relationships, family/whānau circumstances, environment and safety.

- Hauraki Māori Trust Board
- Kahungunu Executive
- Kirikiriroa Family Services
- Papakura Marae
- Turuki Health
- Kōwhai Consulting Limited
- Manaaki Ora Trust
- Ngā Mataapuna Oranga
- Ngāpuhi Iwi Social Services Limited
- Ngāti Awa Social Services Trust Inc
- Ngātihine Health Trust
- Rakeiwhenua Trust
- Raukawa Charitable Trust Board
- Raukawa Whānau Ora Limited
- Taumarunui Community Kokiri Trust
- Te Hau Ora o Ngāpuhi Limited

- Te Kupenga Hauora-Ahuriri
- Te Oranganui Trust
- Te Pou Oranga o Whakatōhea Limited
- Te Rarawa Anga Mua Trust
- Te Rūnanganui o Ngāti Porou Trustee Limited
- Te Taiwhenua O Heretaunga Trust
- Tu Tama Wahine o Taranaki Incorporated
- Te Uri O Hau Tangata Development Limited
- Tūwharetoa Health Charitable Trust
- Tūwharetoa ki Kawerau Hauora
- Waahi Whanui Trust
- Whaiora.
- Kokiri Marae Keriana Olsen Trust
- Te Puawaitanga ki Ōtautahi Trust

Strengthening Families Te Huarahi ki te Whakapiripiri I Ngā Whānau

Strengthening Families is a structured inter-agency case-conferencing system for the coordination of services for tamariki, rangatahi and their whānau.

- Te Whānau O Waipareira
- Te Manu Kōrero o Nga Matauranga
- Kahungunu Executive
- Ngati Maniapoto Marae Pact Trust
- Te Hauora O Ngāti Haua
- Ngaruawahia Tu Tangata Charitable Trust
- Waahi Whanui Trust

Children's Team.

Localised commissioning of services to support tamariki and whānau to be transitioned into future Early Intervention Services.

The Children's Team operate in the following areas;

- Te Tai Tokerau
- Tamaki Makaurau
- Waikato
- Bay of Plenty
- Taranaki – Manawatū
- Wellington – East Coast
- Upper South
- Canterbury.

** for further detail please see Children's team map page.*

Youth Justice

We support young people, whānau and victims of youth crime to restore their mana.

This includes the work to strengthen Rangatahi Courts and Iwi to provide more Iwi FCGs.

Youth Justice Placements.

We are working with the following iwi and Māori organisations;

- Ngāruahine,
- Tui Ora, Taranaki
- Te Rūnanga o Turanganui a Kiwa
- Te Rūnanga o Ngāti Porou
- Matapuna Training Centre
- Whakatū Marae Whānau Ora Services
- Te Ikaroa Rangatahi Social Services Incorporated
- He Waka Tapu
- Rakeiwhenua Trust
- Paraekarangi Trust
- Te Pou Oranga o Whakatohea Limited
- Te Tuinga Whānau Support Services
- Waahi Whānau Trust
- Tūwharetoa O Kirikiriroa Charitable Trust
- Tūwharetoa ki Kawerau Health, Education and Social Services
- Whakaatu Whanaunga Trust
- Te Iwi O Ngati Kahu
- Ngāpuhi Iwi Social Services Limited
- Te Hau Awhiowhio o Otangarei Trust
- Te Kahu Oranga Whānau (Co-Lab)
- Te Ora Hou Northland
- Te Uri O Hau Tangata Development Limited
- Te Rarawa Anga Mua Trust
- Waitomo Papakainga Development Society Inc
- Te Hou Ora Otepoti Inc.
- Awarua Whānau Services, Invercargill
- Te Waka a Matariki
- Te Rūnanga o Otakau
- Te Rūnanga o Hokonui

Intensive Intervention

We support children at risk of harm and their whānau to keep them safely at home.

This new service will be a working initiative across a number of different locations. We continue to engage with iwi and Māori organisations about the number and location of the first sites.

We are currently working with the following Iwi and Maori Organisations

- Te Rūnanga o Ngai Tahu –
- Whakatū Marae Whānau Ora Services
- Raukawa Charitable Trust

Our Mahi Current Focus as at July 2020

Care and Protection

We keep children in the custody of the Chief Executive safe and promote their wellbeing.

New National Care Standards take effect on 1 July 2019. They set out the standard of care every child and young person needs to do well and be well, and to support caregivers so they are ready to open their homes to receive tamariki and rangatahi.

We are currently working with;

- Hauraki Māori Trust Board
- Kokiri Marae Keriana Olsen Trust Total
- Ngāpuhi Iwi Social Services Limited
- Ngāti Awa Social Services Trust Inc
- Ngāti Ranginui Iwi Society Incorporated
- Roopu A Iwi Trust
- Te Ikaroa Rangatahi Social Services Incorporated
- Te Iwi O Ngāti Kahu Trust
- Te Korowai Roopu Tautoko Incorporated
- Te Roopu Awhina Ki Porirua Trust
- Te Rūnanga O Kirikiriroa Charitable Trust,
- Te Rūnanga O Turanganui A Kiwa
- Tirohonga Hou Mo Nga Rangatahi Charitable Trust
- Te Rūnanga o Ngāi Tahu
- Te Toa Matataki (Tuakiri Charitable Trust)
- Waitomo Papakainga Development Society Inc

Whānau Care.

Our goal is for tamariki and rangatahi Māori in care to experience full and happy lives with loving whānau.

We've been working intensively with the following iwi and Māori organisations across Aotearoa to recruit whānau caregivers and co-design models of care that are responsive to Māori.

- Waikato-Tainui
- Te Iwi O Ngāti Kahu
- Te Roopu Awhina ki Porirua Trust
- Te Rūnanga-Ā-Iwi O Ngāpuhi
- Waitomo Papakainga Development Society Inc
- Ngāti Ruanui
- Ngāti Maniapoto
- Tiaki Taoka, – design mode for Ōtakou Whānau Care Service.

Transitions Workers

We prepare and support young people leaving care and youth justice to transition successfully to adulthood.

Transitions support workers.

Transition Workers will guide and support rangatahi to look towards the future, identify their strengths and interests and help them to make and achieve their goals

The following iwi and Māori organisations have been commissioned to deliver this workforce;

- Te Hau Awhiwhio o Otangarei Trust
- Hauraki Māori Trust Board
- Te Rūnanga O Kirikiriroa
- Te Rūnanga o Ngāi Te Rangī
- Ngāti Awa Social and Health Services Trust
- Te Waiariki Pūrea Trust
- Ngāti Raukawa Charitable Trust
- Kahungunu Whānau Services
- Orongomai Community Centre
- Rangitāne o Wairarapa Incorporated
- Te Aka Ora Charitable Trust
- Te Taiwhenua O Heretaunga
- Rangitāne o Tamaki nui Rua
- Te Ora Hou Whanganui
- Maataa Waka Ki Te Tau Ihu Trust
- Te Wānanga o Aotearoa o Ngā Waka
- Purapura Whetu Trust
- Te Hou Ora Whānau Services
- Waahi Whanui Trust
- Arowhenua Whānau Services
- Te Runanga o Nga Tūāhuriri
- Te Runanga o Ngā Maataa Waka
- Te Runanga O Toa Rangatira Incorporated
- Arai Te Uru Whare Hauora Limited
- Nga Kete Matauranga Pounamu Charitable Trust
- Kahui Te Kaha
- Te Runanga O Toa Rangatira Incorporated
- Te Runanganui O Te Atiawa ki Te Upoko Te Ika A Maui Incorporated
- Highbury Whānau Centre
- Muaūpoko Tribal Authority
- Te Ora Hou, Whangarei
- Te Taiwhenua O Heretaunga

Youth Justice

Below is a list of iwi and Māori organisation who are working with our Youth Justice regional teams. It is important to note that the extent of the work will vary from site to site, iwi to iwi and Māori organisations.

Te Tai Tokerau

- Te Iwi o Ngāti Kahu Trust
- Ngāpuhi Iwi Social Services Limited.
- Te Hau Awhiowhio o Otangarei Trust
- Te Kahu Oranga Whānau (Co-Lab)
- Te Ora Hou Northland Inc
- Te Uri o Hau Tangata Development Trust
- Te Rarawa Anga Mua Trust
- Waitomo Papakainga Development Society

Auckland

- Te Whānau o Waipareira Trust
- Tirohonga Hou Mo Ngā Rangatahi Charitable Trust
- Te Tai Awa o Te Ora
- Te Puna Hauora o Te Raki Paewhenua
- Manurewa Marae
- Hoani Waititi Marae
- Nga Hau e Wha Marae
- Te Ngira Papakura Marae
- Te Aho Tapu Trust
- Orakei Marae
- Ruapotaka Marae
- Te Roopu o Wai Ora
- Turuki Health
- Raukura Hauora

Midlands

- Raukawa-Maniapoto Alliance
- Hauraki Māori Trust Board
- Te Korowai Roopu Tautoko INC
- Te Runanga o Kirikiriroa
- Kia Puawai
- Kawerau ki Tūwharetoa Iwi
- Ngāti Raukawa Charitable Trust
- Waahi Whanau Trust
- Ngāti Raukawa Whānau Ora INC
- Te Ahurei a Rangatahi
- Ngā Ringa Āwhina Service Trust
- Ngāti Ranginui Iwi Society INC
- Whakaatu Whanaunga Trust
- Te Pou Oranga o Whakatohea Limited
- Te Tuinga WhanauTrust.
- Te Waka a Matariki

Central

- Te Rūnanga o Tūrangānui a Kiwa
- Matapuna, Tairāwhiti
- Te Aka Ora Charitable Trust
- Te Taiwhenua o Heretaunga
- Āwhina Whānau Services
- Roopu a Iwi Trust
- Te Ikaroa Rangatahi Social Services
- Kahungunu Whānau Services
- Rangitāne o Tāmaki Nui a Rua
- Rangitāne o Wairarapa Incorporated
- Ngāti Ruanui
- Ngaruāhine
- Tui Ora
- Te Runanga o Ngāi Te Rangi
- Te Ora Hou, Whanganui
- Muaūpoko Tribal Authority
- Te Whiri Kōkō
- Highbury Whānau Centre
- Kōkiri Marae Keriana Olsen Trust
- Te Roopu Awhina ki Porirua Trust
- Orongomai Community Centre.
- Ngai Tuahuriri Canterbury
- Te Runanga o Arowhenua
- Te Rūngana o Hokonui

Chatham Islands

Southern

- Whakatū Marae Whānau Ora Services, Nelson
- Waihopai Runaka
- He Waka Tapu, Ōtautahi
- Maata Waka Ki Te Tau Ihu Trust
- Purapura Whetu Trust
- Te Hou Ora Otepoti Inc.
- Te Puna Oranga
- Awarua Whānau Services
- Te Rūnanga o Otakau



Services for Children and Families

Below is a list of iwi and Māori organisation who are working with our Services for Children and Families regional teams. It is important to note that the extent of the work will vary from site to site, iwi to iwi and Māori organisations.

Te Tai Tokerau Region

Ngāti Kahu Social and Health Services, Te Rarawa Anga Mua Trust, Te Rūnanga O Whaingaroa, Te Rūnanga-Ā-Iwi O Ngāpuhi, Te Hau Ora o Ngāpuhi Limited, Ngāpuhi Iwi Social Services Limited, Waitomo Papakainga Development Society, Te Whare Ruruhau o Meri Trust, Korowai Tūmanako, Ngāti Hine Health Trust, Te Hau Awhiowhio o Otangarei Trust, Te Iwi o Ngāti Kahu Trust, Te Ora Hou Northland, He Korowai Trust, Te Runanga O Whaingaroa, Aupōri Ngati Kahu-Te Rarawa Trust, Mauri Whānau Limited, Whare Timatatanga Hou Ora, Aupōri Youth Trust, Nga Hoe Horo O Pawarenga, He Iwi Kotahi Tatou,

Tamaki Makaurau

Te Whare Ruruhau o Meri Trust, Turuki Health, Waikato-Tainui Mokopuna Ora, Te Whānau o Waipareira, Te Tai Awa o Te Ora, Te Aho Tapu, Te Iwi o Ngati Kahu, Korowai Tumanako, Huakina Development Trust, Tu Wahine

Waikato Region

Hauraki Māori Trust Board, Hui Te Rangiora Marae, Ngāti Maniapoto, Raukawa Charitable Trust Board, Te Ahurei A Rangatahi Trust, Te Hauora O Ngāti Haua Trust, Tokoroa Community of Social Services, Waahi Whaanui Trust, Waikato-Tainui, Kainga Aroha.

Taranaki-Manawatu Region

Tui Ora, Tu Tama Wāhine o Taranaki Ltd, Tu Taki Trust, Hinengakau Matua Whangai, Ngāti Rangi Trust, Māori Women's Welfare League Waiariki, Tupoho Iwi Social Services, Wai Ora Christian Trust, Te Kotuku Hauora Ltd, Te Ora Hou Whanganui Inc, Te Oranganui Iwi Health Authority, Mokai Patea, Ngā Ruahine, Ngāti Ruanui, Hinengakau Maatua Whangai, Best Care (Whakapai Hauora) Charitable Trust, Muaūpoko Tribal Authority, Raukawa Whānau Ora.

Bay of Plenty Region

Maketu Social Services, Ngā Potiki A Tamapahore Trust, Ngāti Kahu Hauora, Pirirakau Hauora Charitable Trust, Taupō Māori Women's Refuge, Te Manu Toroa Trust, Te Puna Hauora, Raukawa Settlement Trust, Tūwharetoa ki Kawerau Hauora, Tūwharetoa Māori Trust Board, Te Taumata o Ngāti Whakāue Iho Ake, Ngāti Awa Social Services, Te Rūnanga o Ngāti Awa, Tūhoe Hauora, Ngāi Tūhoe, Whakatohea Iwi Social Services, Te Whānau A Apanui, Ngā Maatapuna Oranga, Ngāti Ranginui, Te Tomika Trust, Whaioranga Trust, Te Korowai Roopu Tautoko

Chatham Islands

Wellington-East Coast Region

Te Roopu Awhina Social Services, Te Rūnanga o Ngāti Porou, Te Runanga O Toa Rangitira Incorporated, Rangitāne o Wairarapa, Kahungunu Executive, Ngāti Kahungunu ki Wairarapa, Te Hauora Runanga o Wairarapa Inc, Kahungunu ki Tamaki nui a Rua, Te Taiwhenua o Tamatea, Te Taiwhenua o Heretaunga, Korāunui Marae, Kokiri Social Services, Māori Women's Welfare League Ikaroa, Roopu A Iwi Trust, Te Ikaroa Rangatahi Social Services Inc, Te Kupenga Hauora-Ahuriri, Te Ora Hou Hawkes Bay Inc, Ririe Care Services, Orongomai Marae Community Center Trust, Te Rungana O Te Atiawa ki Te Upoko Te Ika a Maui Incorporated, Kokiri Marae Keriana Olsen Trust, Te Roopu Awhina ki Porirua Trust, Kahungunu Whānau Services, Te Kupenga Hauora-Ahuriri, Rangitāne o Tamaki nui a Rua

Upper South Region

Ngāti Toa Rangitira, Te Ātiawa o Te Waka-a-Māui, Ngāti Apa ki te Rā Tō, Rangitāne o Wairau, Ngāti Kuia, Ngāti Rārua, Ngāti Kōata, Ngāti Tama ki Te Tau Ihu, Te Rūngana o Kaikōura (Ngāti Kuri), Te Rūnanga o Ngāti Waewae, Te Rūnanga o Makaawhio, Maataa Waka Ki Te Tau Ihu Trust, Te Tai o Marokura Health and Social Service Māori, Te Piki Oranga, Whakatū Marae Whānau Ora Services, Māori Women's Welfare League, Te Waipounamu Poutini Waiora

Canterbury Region

Te Rūnanga o Ngāi Tahu, He Waka Tapu Ltd, Purapura Whetu Trust, Te Puna Oranga Inc, Te Putahitanga o Te Waipounamu,

Lower South Region

Arai Te Uru Whare Hauora Ltd, Awarua Whānau Services, Awarua Runaka Oraka-Aparima Rūnaka, Waihopai Runaka, Hokonui Runaka, Ngā Kete Matauranga Pounamu Charitable Trust, Te Hou Ora Otepoti Inc, Te Iho Awhi Rito Social Services, Tokomairiri Waiora, Ururuwhenua Health Inc, Te Rūnanga o Otakau, Kati Huirapa Runaka ki Puketeraki, Te Rūnanga o Moeraki



Early Intervention and Children's iwi and Māori Teams

It is important to note that the extent of the engagement will vary from site to site, iwi to iwi and Māori organisations.

Te Tai Tokerau Region

Ngāti Hine Health Trust, Te Hau Awhiowhio o Otangarei Trust, Te Uri o Hou Tangata Development Limited, Waitomo Papakainga Development Society, Te Whare Ruruhau o Meri Trust, Ngāti Kahurangi Health and Social Services, Te Hau Ora o Ngāpuhi Limited, Te Rarawa Anga Mua Trust, Te Ora Hou Northland, Aupōuri, Ngāti Kahurangi, Te Rarawa Trust, Ngāpuhi Iwi Social Services Limited, Ngāti Kahurangi Social and Health Services

Tāmaki Makaurau Region

Te Whare Ruruhau o Meri Trust, Turuki Health, Waikato-Tainui Mokopuna Ora, Te Whānau o Waipareira, Te Tai Awa o Te Ora, Papakura Marae

Bay of Plenty Region

Tūhoe Hauora, Whakatohea Iwi Social Services, Tūwharetoa ki Kawerau Health, Ngāti Awa Social Services, Te Po Oranga o Whakatohea Ltd., Te Puna Ora o Mataatua, Te Arawa Whānau Ora, Manaaki Ora Trust,

Waikato Region

Waikato-Tainui, Waahi Whanui Trust, Te Rūnanga O Kirikiriroa, Kirikiriroa Family Services Trust, Te Kohao Health, Hauora Waikato, Ngāa Ringa Awhina, Te Ahurei a Rangatahi, Ngāti Maniapoto Marae Pact Trust, Te Hauora o Ngāti Haua, Ngaruawahia Tu Tangata Charitable Trust Incorporated,

Taranaki Manawatu Region

Te Oranganui, Tupoho Iwi and Community Services, Ngāti Rangī, Mokai Patea, Te Kohanga Reo Collective, Te Ora Hou, Raukawa Whānau Ora, Muaupoko Tribal Authority, Te Kupenga Hauora-Ahuriri

Wellington-East Coast Region

Manaaki Tairāwhiti, Te Aka Ora Charitable Trust, Ngāti Porou Hauora, Horouta Collective (Whānau Ora), Māori Women's Welfare League - Tairāwhiti, Whānau Oranga, Turanga Ararau, Kahungunu Executive



South Island

Rangitaane, Te Piki Oranga, Maataa Waka Ki Te Tau Ihu Trust, Te Hauora o Ngāti Rārua Ltd. Ngāti Apa ki te Rā Tō

Te Puawaitanga Ki Ōtautahi Trust, Te Putahitanga o Te Waipounamu, Maataa Waka Ki Te Tau Ihu Trust, He Waka Tapu, Te Puna Oranga, Arowhenua Whānau Services



Appendix I Instrument of a relationship Memoranda of Understanding

Memoranda of Understanding

Ngāti Toa Rangatira

This agreement was signed between Ngāti Toa Rangatira and Child, Youth and Family in November 2013. The relationship is managed by the Chief Executive of Ngāti Toa Rangatira and Porirua Site Manager. The focus of this agreement is to provide external coordination of Family Group Conferences with the Porirua site.

Ngāti Kahungunu Iwi Incorporated

The MoU between Oranga Tamariki and Ngāti Kahungunu Iwi INC (NKII) was signed in 2017 between the then Deputy Chief Executive, Child, Youth and Family and NKII Chief Executive. The approach to this relationship is that partners will commit to continuous open discussions and positive negotiation and a problem solving approach to all matters related to fulfilling the purpose of the partnership.

Ngāti Tūwharetoa and the Taupō collective Impact Governance Group

The purpose of this MoU is to establish and promote a collaborative working relationship between Ngāti Tūwharetoa and the Taupō Collective Impact Governance Group. Oranga Tamariki is a current member of the Taupō Collective Impact Governance Group. It is important to note that other government agencies are also involved in the governance group. These agencies are; NZ Police, Corrections, MSD, MoE, MoJ, HNZ, TPK and ACC

Te Rūnanganui o Ngāti Porou

This Memorandum of Understanding was signed between Te Rūnanganui o Ngāti Porou (TRNoNP) and Child, Youth and Families (CYFS) in 2014.

This agreement provides an opportunity for both parties to align its respective strategic intentions, principles and values which will include exploring a different model for working with whānau which will be led by the Rūnanga.

New Zealand Māori Council:

This memorandum was signed on the 30 November 2019 between Executive Director of NZMC and the CEO of Oranga Tamariki. It records a mutual commitment to explore three areas for potential

collaboration. The MOU also formalises the parties' commitment to a collaborative, mutually beneficial and long lasting relationship to create better outcomes for tamariki and their whānau.

Te Rūnanga o Ōtākou and Kāti Huirapa Rūnaka ki Puketeraki

This agreement was signed in 2018 between Oranga Tamariki and Te Kahu Oranga Whānau, an Iwi/Māori collective made up of Ngāti Kahu Social and Health Services, Te Rarawa Anga Mua Trust, Te Whare Ruruhau o Meri Trust and Waitomo Papakainga.

The agreement commits Oranga Tamariki and Te Kahu Oranga Whānau to work together in implementing activities and achieving positive outcomes for Tamariki Māori in te Tai Tokerau. Both parties worked together for four years prior to the signing of the agreement to form a high trust relationship that this agreement continues to build on.

Te Rūnanga o Ngāi Tahu and Te Pūtahitanga o Te Waipounamu

This tripartite agreement between Te Rūnanga o Ngāi Tahu and Te Pūtahitanga o Te Waipounamu was signed in September 2017. The MoU records a model being implemented with the Christchurch-East Oranga Tamariki site as a pilot and notes this model may be implemented across other areas in the accordance with the Ngāi Tahu rūnanga aspirations.

The parties commit to a set of actions individual and together to improve the support available to Ngāi Tahu tamariki and their whānau that the site works with.



Social Accords

Ngāi Tūhoe Service Management Plan

This relationship is based on the Treaty settlement with four agencies including MSD. The document was signed by the then CYFS Regional Director and we are continuing work together on the basis that the commitments made have been taken up by Oranga Tamariki.

Te Hiku Social Accord

This agreement was signed on the 5th of November 2013, and Oranga Tamariki signed its own Portfolio Agreement in February 2019. The Accord commits the signatories to work in partnership to achieve the social transformation of Te Hiku people. The iwi consider quality partnerships with Crown agencies are a key part of providing for social transformation rather than an end in itself.

Tūwharetoa Collective Accord

This agreement was signed with the Tūwharetoa Collective in 2018 that acknowledges a mutual commitment to work together to improve outcomes for Tamariki which includes establishing a kaupapa-Māori Transition Whare.

Relationship Agreements

Ngāti Rangī Accord

A relationship agreement was signed in 2018 between Te Tōtarahoe o Paerangi (Ngāti Rangī) and Oranga Tamariki. The Relationship agreement is to establish a framework for developing and maintaining a positive and enduring working relationship, to create opportunities to enhance the social and economic wellbeing of tamariki and Ngāti Rangī.



Appendix II Strategic Partnerships

Strategic Partnership Agreements

Te Rūnanga o Ngāi Tahu (signed in October 2018)

The primary objectives, that underpin this relationship are; “our Ngāi Tahu tanga is central to who we are”, and “the mana of the whānau is assured”.

This will be realised when: there are no Ngāi Tahu tamariki or rangatahi in state care, all Ngāi Tahu tamariki and rangatahi are connected and culturally supported and their communities and organisations are working collaboratively to support whānau with identified needs and aspirations.

We have agreed a set of priorities for the current year and projects are underway to progress our respective and mutual interests.

Te Rūnanga Ā Iwi o Ngāpuhi (signed in December 2018)

Oranga Tamariki and Te Runanga Ā Iwi o Ngāpuhi, seek to target its investment to whānau who are most at risk of not achieving their health and wellbeing potential and who would benefit most from support that enables them to become more self-managing, to be confident about taking responsibility and making decisions to improve their own lives, and capable of accessing the level and quality of services they require.

The current priority for action is the expansion of Ngāpuhi whānau involvement in the care arrangements for Ngāpuhi tamariki.

Waikato-Tainui (signed in April 2019)

There are three overarching objectives, for Waikato-Tainui. The first objective looks at having no Waikato-Tainui tamariki and mokopuna in state care; the second supporting current tamariki and mokopuna to reconnect back r to their whānau, hapū and cultural identity. The final objective is to have whānau empowered and supported to care for their tamariki and mokopuna.

Significant work is underway to mainstream the arrangements under Mokopuna Ora to engage Waikato – Tainui whānau in care, and a collaborative design process is well advanced for how we work better and together with whānau.

Ngāi Tūhoe (signed August 2019)

This strategic partnership agreement has been given the name of Matemateāone. It records a shared work focus on the design and development of caregiver and home assessment standards, enabling a “Tūhoe” centric set of assessment standards. Through the shared work focus, the parties hope to help promote community resilience and whānau responsibility, so that tamariki are no longer penalised for suffering the consequences of lives poorly lived.

The current focus of work is on ensuring Ngāi Tūhoe are aware of all Ngāi Tūhoe tamariki in care and who come to the attention of Oranga Tamariki.



Appendix III Māori specific roles and representation

Current Focus

Māori Specific roles

Iwi led FGC Coordinators
Iwi, hapū and other Māori organisations.

Te Runanga Nui o Ngāti Porou
2 x FGC Coordinators,
1 Kairaranga

Rangitāne o Wairarapa Incorporated

2 x FGC Coordinators,
1 Kairaranga

Rangitāne ki Tamaki Nui a Rua
1 x FGC Coordinator

Ngāti Toa Rangatira
1 x FGC Coordinators,
1 Kairaranga

Ngāti Raukawa Whānau Ora Inc.
1 x FGC Coordinators, 1 Kairaranga

Te Whare Ruruahu o Meri
2 x Kairaranga

Ngāti Kahungunu
3 x Hui a Whānau Facilitators

Tangata Whenua representation on grievance Panels

We have 9 panels across the country for each residence (C&P residence and YJ residence). Grievance Panels consist of three panel members (a total of 27 panellist nationally).

The legislation states that each Grievance Panel will consist of one tangata whenua member from the area in which the Residence is situated. Below are the names of the organisations who we are look to for nominations for each panel.

Youth Justice

- **Whakatakapokai**
- **Korowai Manaaki**
nominated by Te Ākitai
- **Te Maioha**
nominated by Ngāti Rangiwewehi
- **Te Au rere ki te Tonga**
nominated by Rangitane/Whanganui
- **Te Puna Wai**
nominated by Te Taumutu Rūnanga

Care and Protection

- **Epuni**
nominated by Waiwhetu
Marae/Te Atiawa
- **Te Oranga**
nominated by Te Rūnanga o Ngāi Tahu
- **Te Poutama**
nominated by Te Ngāi Tu Ahūri
Rūnanga
- **Puketai**
nominated by Puketeraki, Otakou
and Moeraki

We also have 2 other panel members that identify as Māori.





Te Kāwanatanga o [Aotearoa](#)